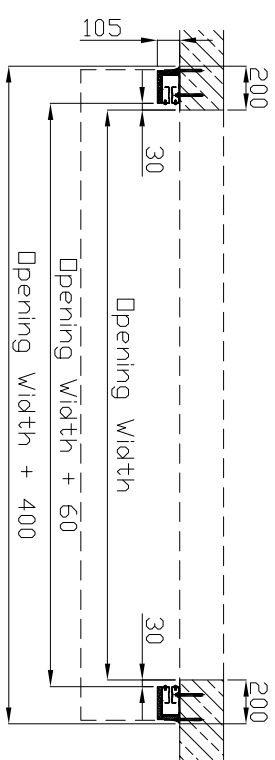
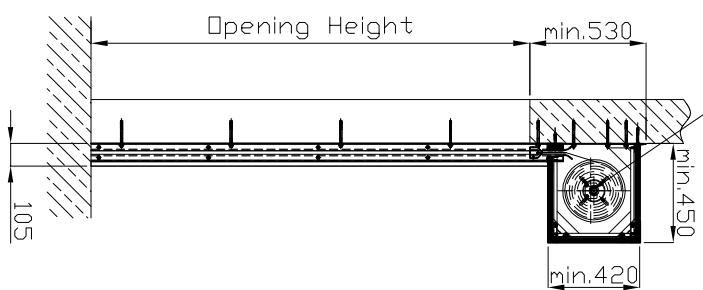
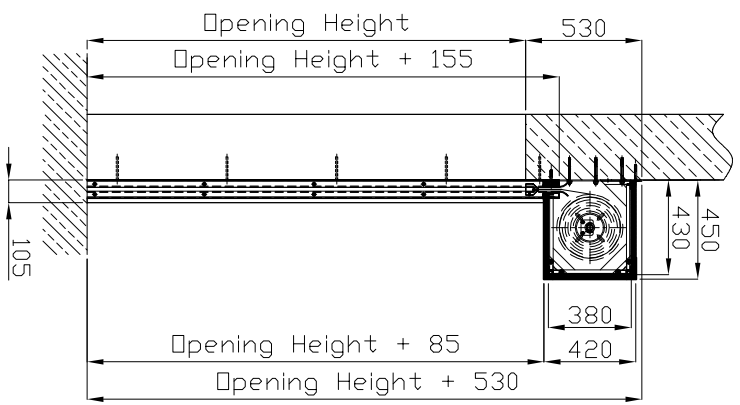


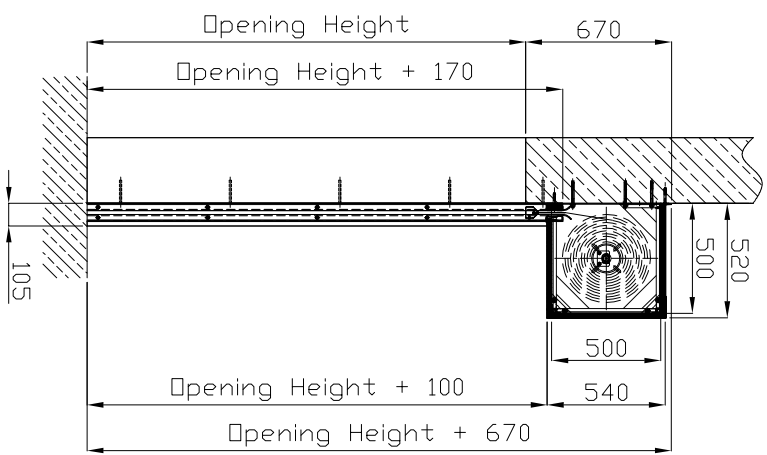
DRIVE UNIT BECKER XU120/Z1M
 operational voltage: 230V AC, 50 Hz
 power supply: 3 x 1.5 mm², leading 10A delay
 motor performance: 0.55 kW, output torque 12Nm



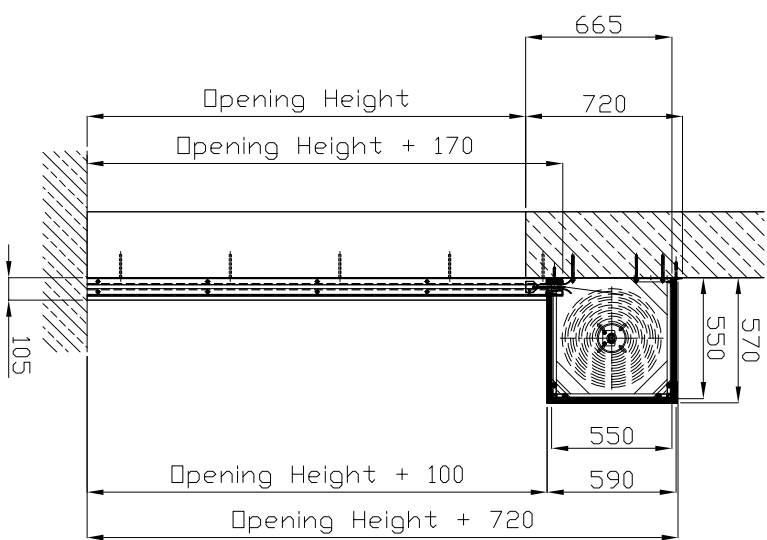
Type 1 housing.



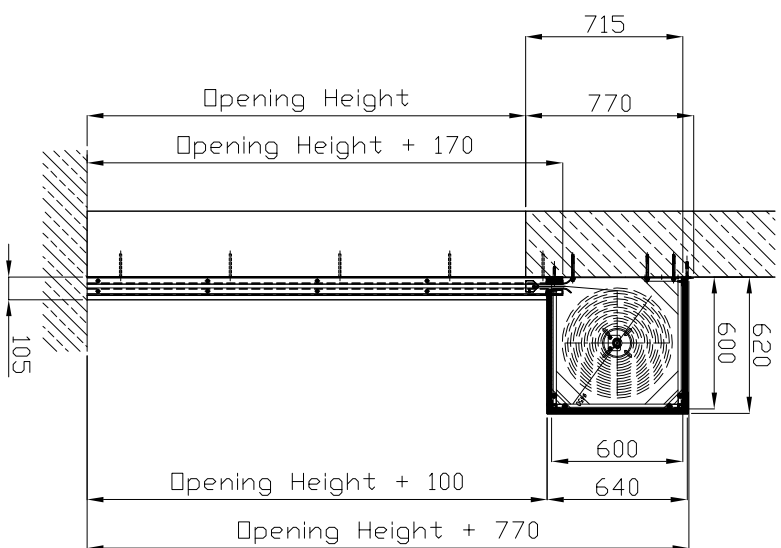
Type 2 housing.



Type 3 housing.



Type 4 housing.



Type 5 housing.

